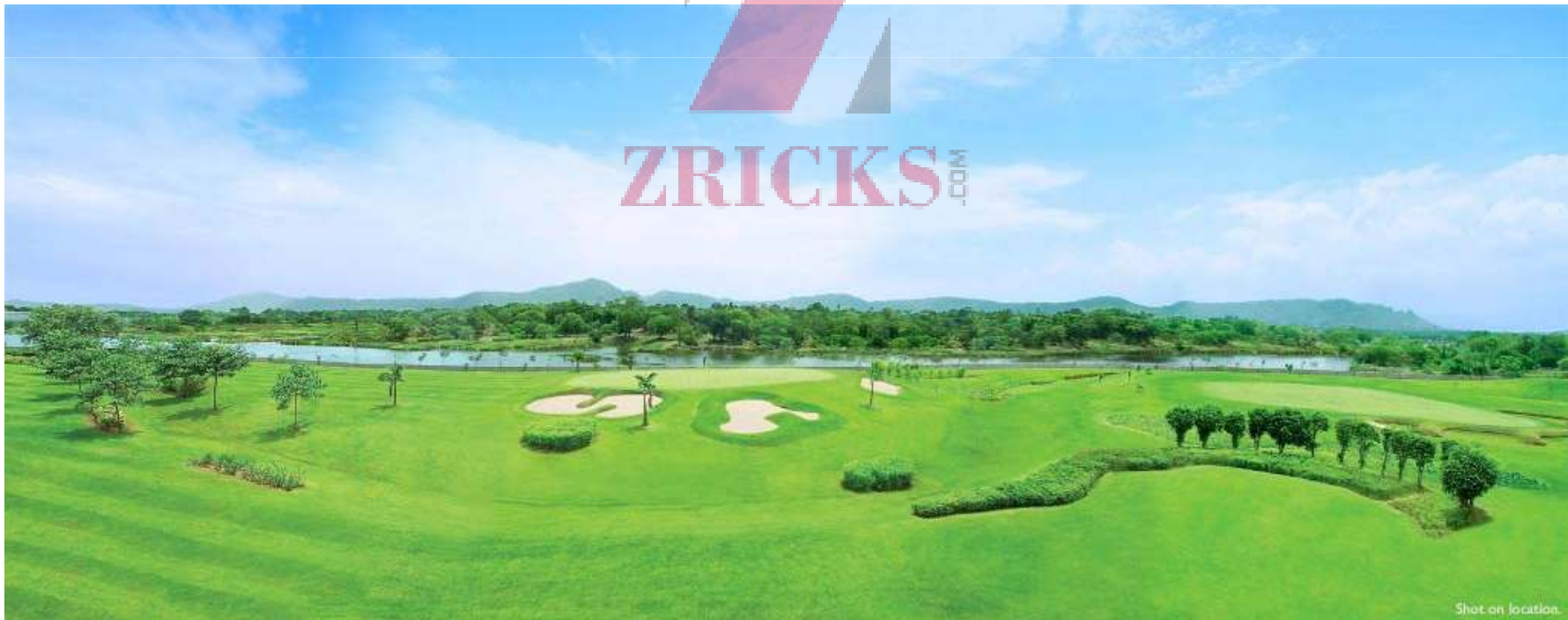


# Lodha Golf Links Palava, Dombivali



# Project Overview

- Lodha Golflinks is situated at Palava - 21st century India's foremost privately planned city
- Declared a 'Mega City' by the Government of Maharashtra, Palava has been envisioned as one of the top 50 places to live in the world by 2020
- Strategically located at the junction of Navi Mumbai and Dombivali with excellent connectivity by rail, road and air
- Will extend over 5000 acres and be home to over 1 lac families, fulfilling the dream of a better life for Mumbai's citizens



# Key Offerings

## Duplex Villa

- 25 exclusive villas - contemporary in design
- Each spacious villa has its own delightful garden, and a shaded porch that can park 2 cars
- Offers 4 spacious bedrooms
  - Luxuriously appointed bathrooms
  - Private home theatre
  - Sophisticated kitchen, store room and a separate room and bathroom for your staff
  - Each villa boasts of a unique alfresco dining area, built over a serene water body and surrounded by cascading water walls.
- Rooms open out onto cosy open-air mini-terraces
- Entry is marked by a beautiful water body



# Key Offerings

## 3 Bed Residences

- Spacious, stylishly designed and elegantly finished, each 3-bedroom residence
  - All residences with sun decks and open-air spaces, offering breathtaking views of the golf course and river
- Beautifully landscaped, vehicle-free podium
- Clubhouse, Pool, Spa, Indoor games room, Reading lounge and Mini-theatre offer you the entire gamut of leisure options.
- Taking luxury to another level, are a few, premium garden residences
- These offer the privilege of a private garden



# Amenities

- Apart from the joy of being able to get in a round of golf whenever you wish to, Lodha Golflinks offers an exclusive
- Golf Clubhouse, inspired by the designs of the famous club houses at St Andrews and Augusta, Spread over 20,000 sq. ft.
- Swimming Pool
- Gym
- Badminton
- Steam Treatment
- Sauna Session Massage
- Children's pool
- Indoor Games room with carrom, snooker and chess, a well-stocked library, or a relaxed stroll in the beautifully landscaped grounds, dotted with soothing water bodies
- Well-equipped play area
- Mini Theatre
- A Cafe and an Open-Air dining

- Air conditioned apartments – Split AC in living dining and all bedrooms
- Agglomerate marble flooring in the living, dining, passage and Puja Area.
- Laminated wooden flooring in all bedrooms.
- Natural stone flooring and vitrified tile dado in toilets.
- Kohler\* sanitary ware and Hansgrohe\* CP fittings in toilets.
- Four fixture master toilet
- Kitchen finished with granite platform, Vitrified tile flooring and ceramic tiles dado
- Stainless steel sink in kitchen
- Multi-tier security with video door phone and controlled access
- Dedicated 24x7 power supply and water supply systems
- a top-notch ICSE school
- World-class Mall and Multiplex

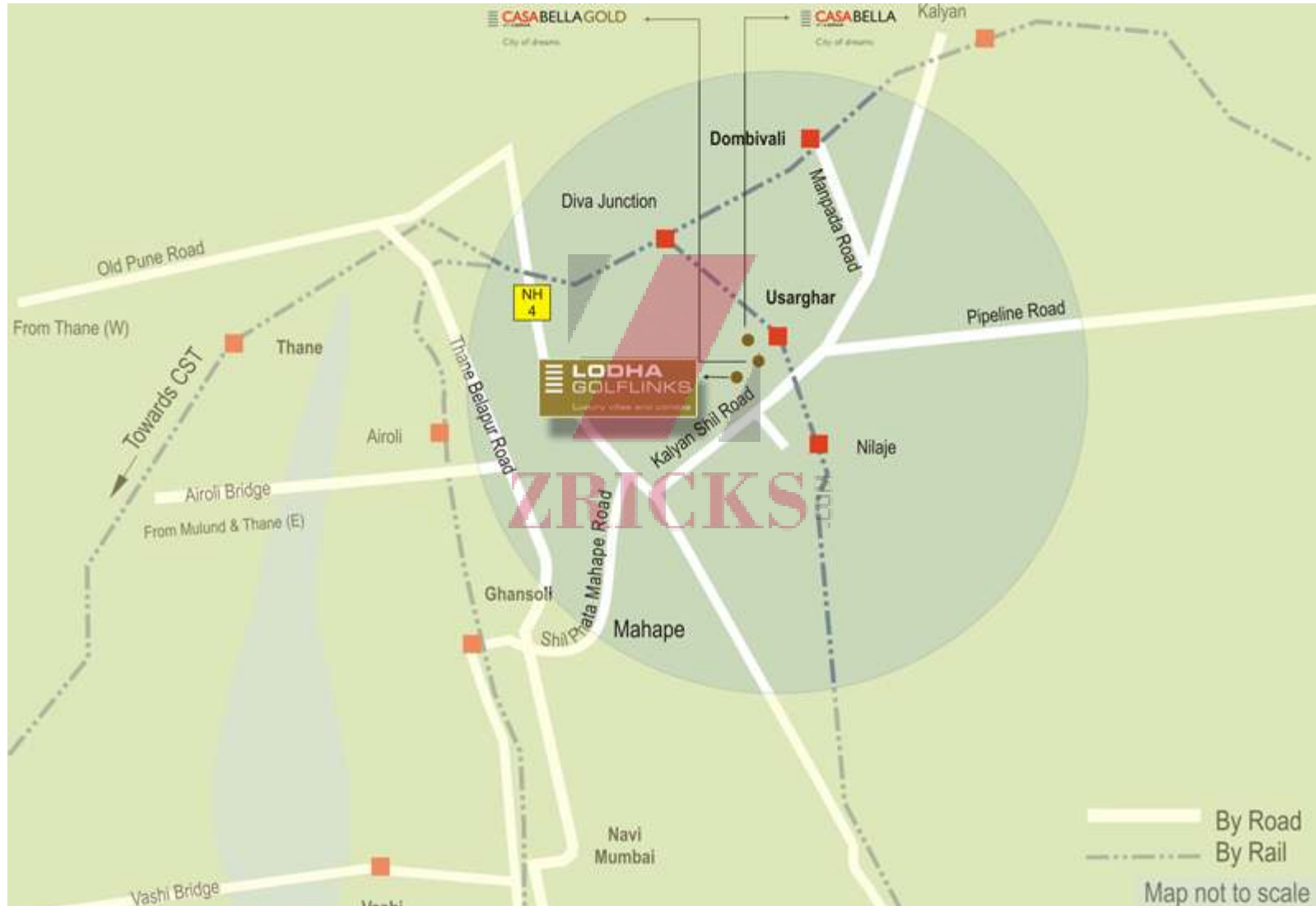
# Key Distances

- 15 minutes from Navi Mumbai and DAKC
- 25 minutes from Thane
- 8 km from Dombivali
- 20 minutes from the proposed International airport
- Short walk from Nilje railway station on the Diva-Panvel line
- Proposed Monorail service, with station located within Palava



ZRICKS  
COM

# Location Map



# Floor Plans





# Floor Plans



# Floor Plans



# Floor Plans

## 3 BHK PREMIUM CONDOMINIUMS

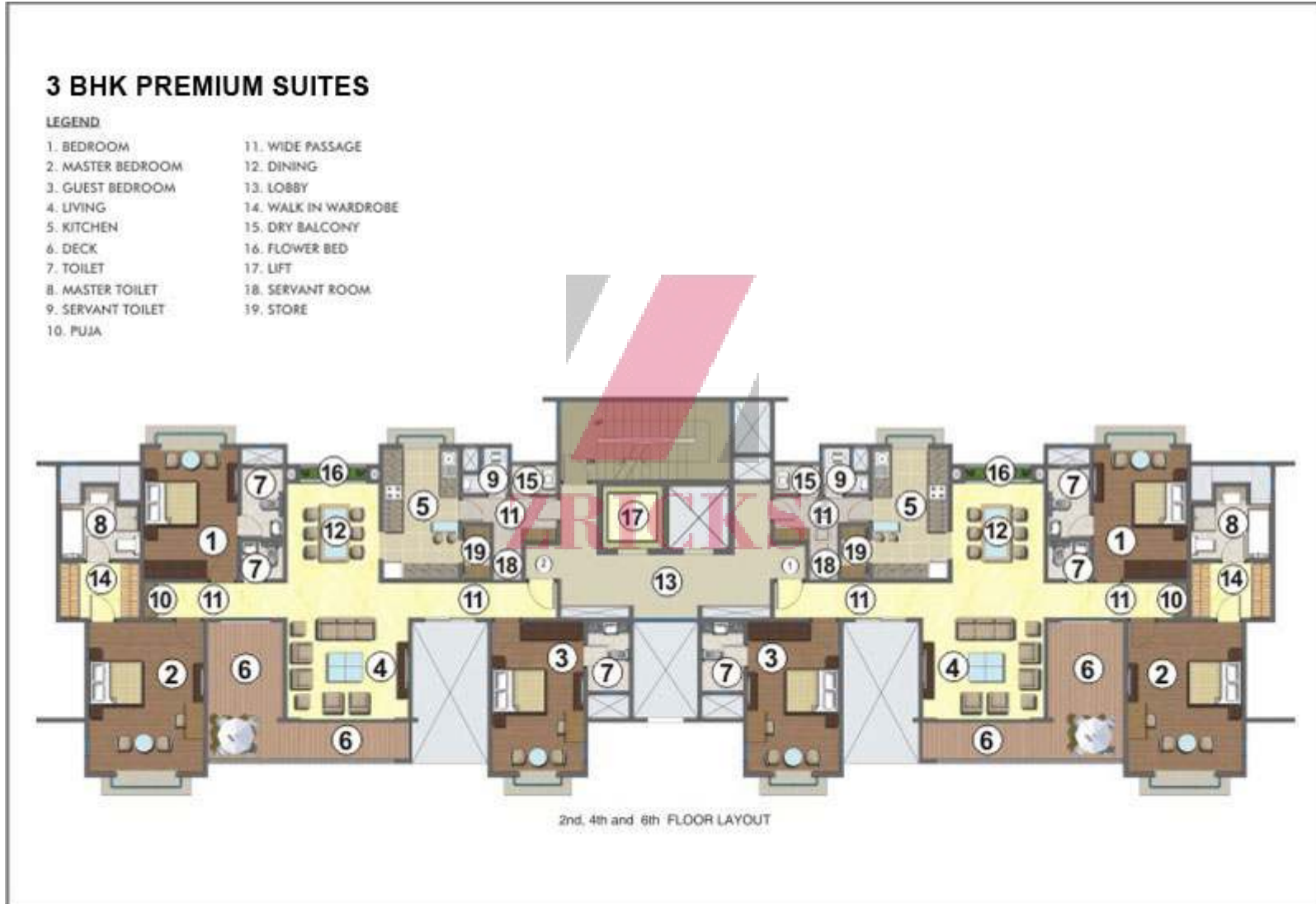
### LEGEND

- 1. BEDROOM
- 2. MASTER BEDROOM
- 3. GUEST BEDROOM
- 4. LIVING
- 5. KITCHEN
- 6. DECK
- 7. TOILET
- 8. MASTER TOILET
- 9. SERVANT TOILET
- 10. PUJA
- 11. WIDE PASSAGE
- 12. DINING
- 13. LOBBY
- 14. WALK IN WARDROBE
- 15. DRY BALCONY
- 16. FLOWER BED
- 17. LIFT
- 18. ENTRANCE
- 19. SERVANT ROOM
- 20. STORE
- 21. PRIVATE GARDEN
- 22. COMMON LAWN



1ST FLOOR -GARDEN APARTMENT LAYOUT

# Floor Plans



# Floor Plans



# Site Layout



# Actual Golf Course Photographs



# Actual Golf Course Photographs



ZRICKS.COM



# Actual Golf Course Photographs

